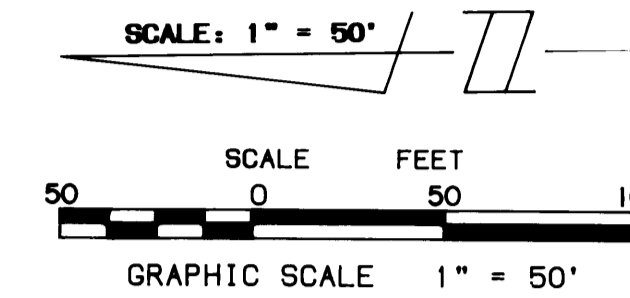


DECEMBER, 1987

A PLAT OF CARMEL

SHEET 3 OF 3

BEING A REPLAT OF TRACTS 36 AND 45,
PALM CITY FARMS, AS RECORDED IN PLAT BOOK 6, PAGE 42,
AND LYING IN SECTION 13, TOWNSHIP 38 SOUTH, RANGE 40 EAST
MARTIN COUNTY, FLORIDA



I, MARSHA STILLER, CLERK OF THE CIRCUIT COURT OF MARTIN COUNTY, FLORIDA, HEREBY CERTIFY THAT THIS PLAT WAS FILED FOR RECORD IN PLAT BOOK 11, PAGE 13, MARTIN COUNTY, FLORIDA, PUBLIC RECORDS, THIS DAY OF _____ A.D., 1987.

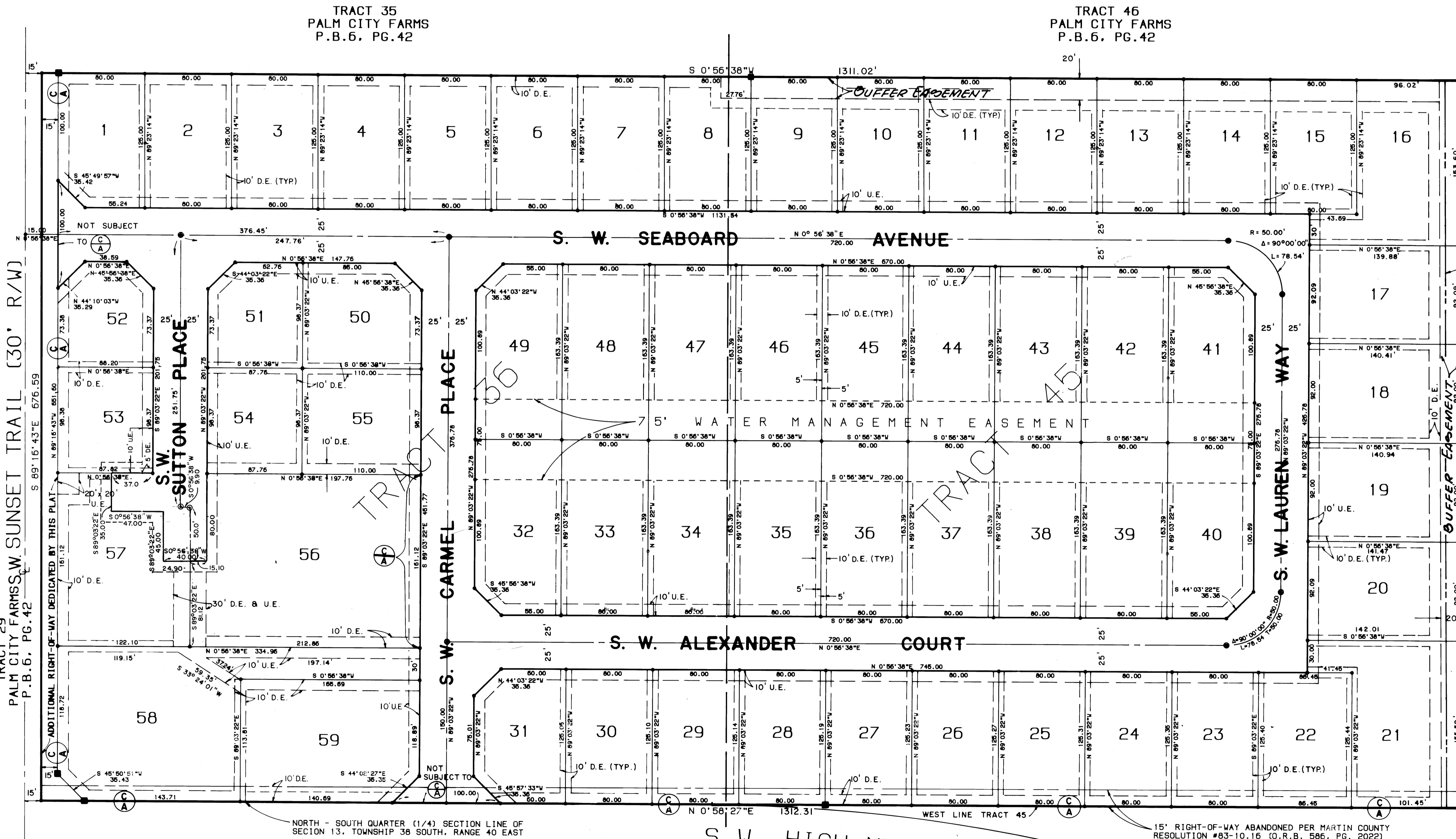
MARSHA STILLER, CLERK
CIRCUIT COURT
MARTIN COUNTY, FLORIDA

BY DEPUTY CLERK

FILE NO.

TRACT 35
PALM CITY FARMS
P.B.6, PG.42

TRACT 46
PALM CITY FARMS
P.B.6, PG.42



LOCATION MAP

TRACT 52
PALM CITY FARMS
P.B.6, PG.42

30' R.O.W. ABANDONED PER MARTIN COUNTY RESOLUTION 87-3.11 (O.R.B., PG. 677.29)

- NOTES:
- DENOTES SET PERMANENT REFERENCE MONUMENT (P.R.M.)
 - DENOTES SET PERMANENT CONTROL POINT (P.C.P.)
 - D.E. = DRAINAGE EASEMENT
 - U.E. = UTILITY EASEMENT
 - BEARING BASE: THE NORTH-SOUTH QUARTER (1/4) SECTION LINE OF SECTION 13/36/40 IS TAKEN TO BEAR N 00° 56' 27" E AND ALL OTHER BEARINGS ARE RELATIVE THERETO. THERE SHALL BE NO BUILDING OR STRUCTURES PLACED ON UTILITY EASEMENTS.
 - THERE SHALL BE NO BUILDINGS OR THE PLANTING OF TREES OR SHRUBS ON DRAINAGE EASEMENTS.
 - WHEN DRAINAGE AND UTILITY EASEMENTS CROSS, DRAINAGE EASEMENTS SHALL TAKE PRECEDENCE.
 - NO LOT SPLITS EXCEPT TO CREATE LARGER LOTS.
 - CONTROL OF ACCESS - NO VEHICULAR ACCESS WITHOUT APPROVAL OF CARMEL HOMEOWNERS ASSOCIATION AND MARTIN COUNTY BOARD OF COUNTY COMMISSIONERS.

TRACT 37
PALM CITY FARMS
P.B.6, PG.42

NOTICE: THERE MAY BE ADDITIONAL RESTRICTIONS THAT ARE NOT RECORDED ON THIS PLAT THAT MAY BE FOUND IN THE PUBLIC RECORDS OF THIS COUNTY.

S.W. HIGH MEADOW AVENUE

TRACT 44
PALM CITY FARMS
P.B.6, PG.42

LINDAHL, BROWNING FERRARI & HELLSTROM, INC.
Consulting Engineers, Planners & Surveyors
P.O. BOX 727
JUPITER, FLORIDA 33458

3 3